

CYNDERELLA



Welcome Aboard!

Accommodation for 8 guests in 4 cabins.

Unique 2 master staterooms layout. On deck master suite with a king size bed.

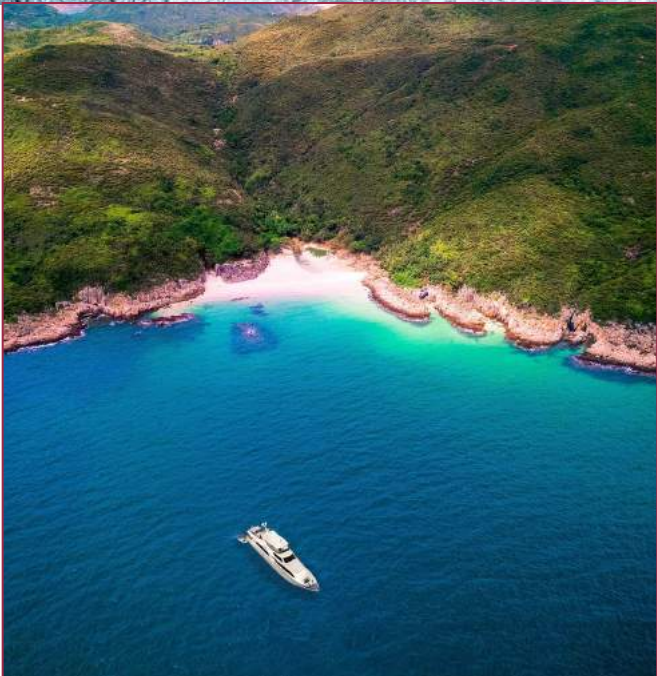
Below deck full-beam second master suite with a king size bed.

Two twin staterooms convertible to queen size doubles.





READY FOR YOUR NEXT ADVENTURE?





VESSEL SPECIFICATIONS

Length: 30.78 metres (101')

Beam: 6.38 metres (20' 11")

Draft: 1.73 metres (5' 8")

Number of Crew: 4

Built: 2010

Refit: 2022, Builder: Hargrave, Flag: USA

Hull construction: Composite

Hull configuration: Semi Displacement

Number of guests: 8

Number of cabins: 4

Bed configuration: 2 King, 4 Single or 2 Queen

Cabin configuration: 2 Full Beam Masters with King Beds

Two Double Cabins with 4 Twins, or Two Queens

Engines: Caterpillar 1675hp / 1249kW

Cruising speed: 13 knots

Additional: Air Conditioning, Deck Jacuzzi, Gym/Exercise
Equipment, Multiple Water Toys

Stabilizer Underway

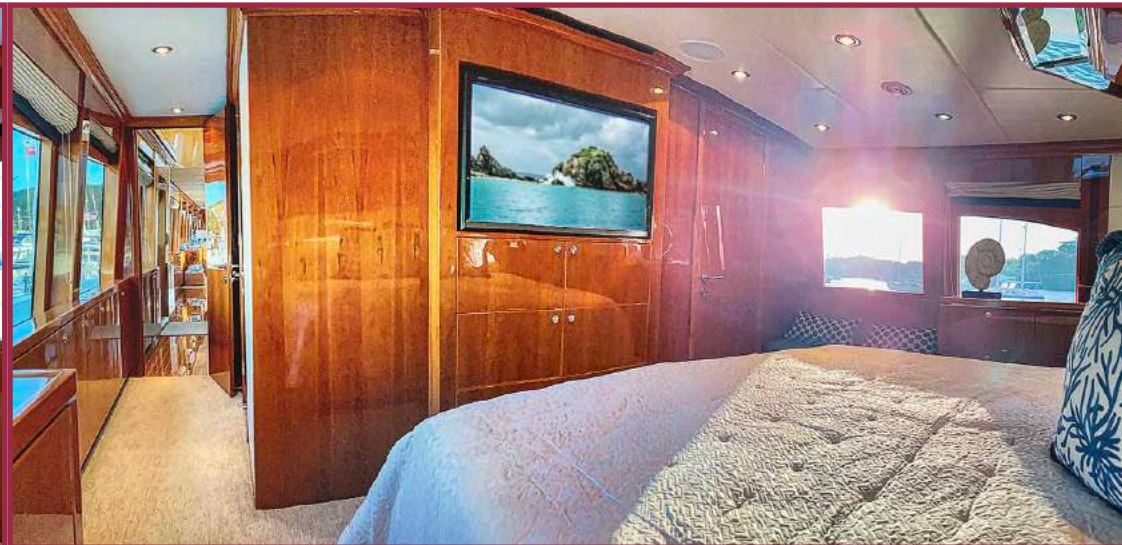
WiFi Connection On Board

Large Master Bath



On Deck Master

“We loved how much room we all had...”



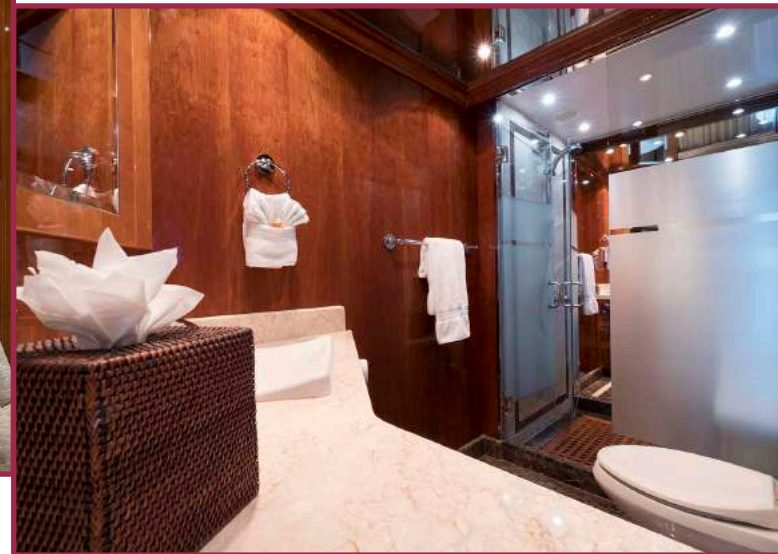
“Everything was fabulous and everyone had a terrific time! The crew was amazing and anticipated our every need and whim... Outstanding!”



Lower Master



Full Beam His & Her's
Master Bath





Convertible Twin/Queen Staterooms



Large Main
Salon



Elegant main
dining for
formal dinners.

Sunset Dinners on the Aft Deck



“Incredible food and service! We looked forward to every meal. The crew took really good care of us.”





Large Upper Deck

The flybridge features a huge U-Shaped seating area plus separate bar which provides plenty of open space for cocktails and al fresco dining. Relax on the sun pads, or remove to jump in the hot tub.





Enjoy panoramic views while cruising.



WATER TOYS

SeaBob

3 Person Yamaha Wave Runner

Jetsurf Motorized Surfboard

Two Hobie Mirage Eclipse SUP
Pedal/Paddle Boards

Nautibuoy Inflatable Platform

Towable Tubes and Floats

Fishing Equipment

Snorkel Gear

Brownies Third Lung Hookah System

Water Ski Equipment



TENDERS

32' Grady White dual console tow behind tender (twin 300HP Yamahas)

15' Nautica RIB Inflatable tender

All Day Fun

Start the day with some fishing, hit the watersports, then explore the area, have some lunch, island hop, and finish with an amazing meal onboard and a breathtaking sunset.

Not a bad day!





Work out with a view

Elliptical workout/exercise machine

Yoga Mats

Hobie Elliptical SUPS

Free weight dumbbells & workout resistance bands



Jetsurf followed by an amazing sunset



BOOK YOUR NEXT ADVENTURE TODAY!



We'll get you there.



We look forward to having you on board soon.
- Captain Paul